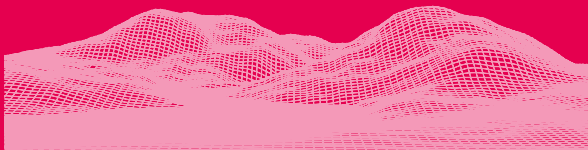




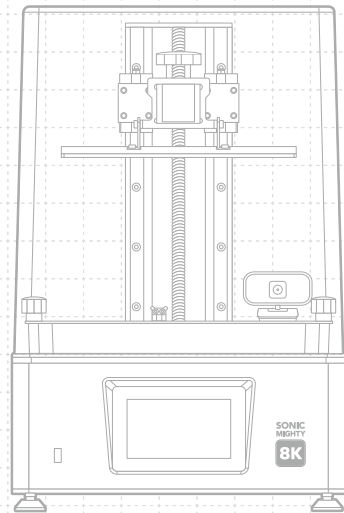
SONIC
MIGHTY

8K



Dear User,

Thank you for joining us. Please be sure to read the Sonic Mighty 8K manual thoroughly and carefully follow the step-by-step instructions to enjoy the best printing experience.

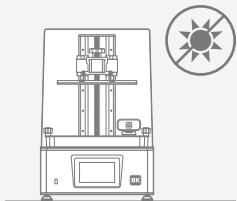




Please scan the QR code for
Sonic Mighty 8K user manual
in other languages.

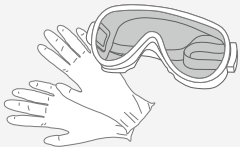
| | |
|----|---|
| 03 | 01 Before You Start |
| 04 | 02 Introduction |
| 06 | 03 Prepare Your 3D Printer <ul style="list-style-type: none">· Guided Process for Initial Use· Z-Axis Calibration· Moving the Slider on the Z-Axis· Z-Offset Setting |
| 08 | 04 Prepare Your CTB File |
| 08 | 05 File Import & Network Connection |
| 10 | 06 First Test Print |
| 10 | 07 Remote Control App - Phrozen GO |

01 Before You Start



Stable Printing Environment

Store your 3D printer in a dry and ventilated environment. Avoid exposure to direct sunlight, and make sure to place the printer on a flat surface.



Protective Measures

While printing and using resin, please make sure to wear gloves, masks, protective goggles, and long-sleeved clothing.

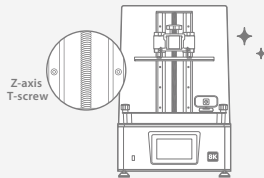
Maintenance

Clean the Z-Axis

Wipe dry the z-axis screw, and apply a thin layer of general lubricant on the z-axis T-screw to make it rotate smoothly.

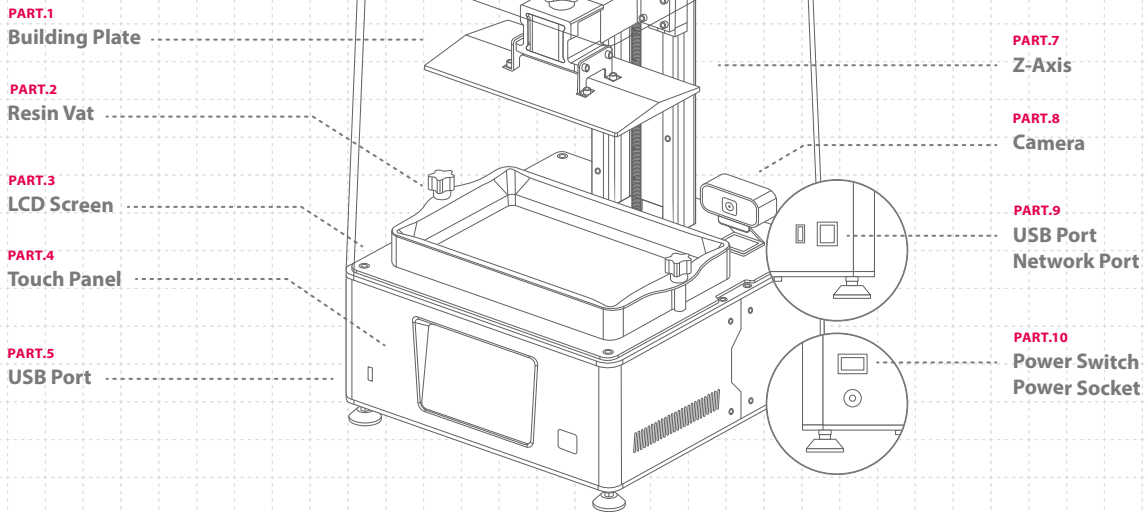
Clean the 3D Printer

Use 95% alcohol and tissue paper to carefully clean the printer, resin vat, and the building plate.



02 Introduction

Printer Parts



The Toolbox



After Sales Service Card



Gloves



Power Cord & Adapter



Plastic Funnel



Scrapers



Allen Wrench



USB



Wi-Fi Adapter

Operation

| | |
|-----------------|-----------------------------------|
| System | Phrozen OS |
| Operation | 5 inch Touch Panel |
| Slicer Software | CHITUBOX V1.9.3 and above |
| Connectivity | Front USB Port Ethernet Wi-Fi |
| Built-in Memory | 3.5 GB |

Printing Specifications

| | |
|--------------------|------------------------------|
| Technology | Resin 3D Printer - LCD Type |
| Light Source | Linear Projection LED Module |
| XY Resolution | 28 μ m |
| Layer Thickness | 0.01-0.30 mm |
| Max Printing Speed | 70 mm / hr |
| Power Requirement | DC 24V ; 5A |

Hardware Specifications

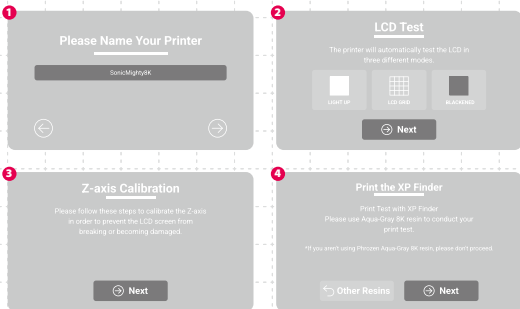
| | |
|-----------------|-----------------------|
| Printer Size | 33.7 x 33.7 x 51.6 cm |
| Printing Volume | 21.8 x 12.3 x 23.5 cm |
| Printer Weight | 14.3 kg |

* All specifications have been tested in a laboratory. Please note that certain specifications may be subject to change without prior notice.

03 Prepare Your 3D Printer

Guided Process for Initial Use

When turning on your 3D printer for the first time, please follow the on-screen tutorial setup on the touch panel to complete the initial tests, including the LCD test, z-axis calibration, and first test print.



* If you miss the tutorial setup, please go to the "Settings" page on the left column of the touch panel and click "System Settings" > "Device Test" > "Factory Settings." The machine will restart and display the tutorial setup.

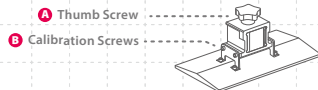
Z-Axis Calibration

Go to the "Tools" page on the left column of the touch panel and click "Z-Axis Control" > "Z-Axis Calibration."



Follow the on-screen instructions to perform z-axis calibration:

- 1 Remove the resin vat. Place a piece of A4 paper on top of the LCD screen.
- 2 Install the building plate and secure the thumb screw tightly. Then loosen the four calibration screws on both sides of the building plate.
- 3 Wait for the building plate to touch the LCD screen, then tighten the four calibration screws on both sides of the building plate.
- 4 Click "Finish" and wait for the building plate to return to its original position to complete the z-axis calibration.



Moving the Slider on the Z-Axis.

To use this function, please pay attention to the procedure below each time you turn on the printer to let the z-axis detect the zero position:

- If you replace or readjust the building plate, z-axis, LCD screen, and screen protector, z-axis calibration needs to be performed each time afterward.
- If there is no need to replace or adjust the above parts, please click "Move to Z-Axis Zero Position".

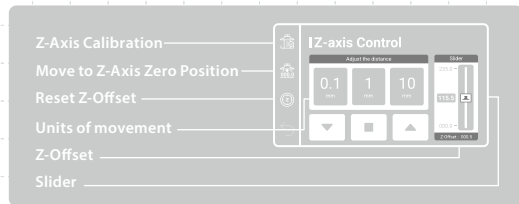
* After completing the step, you'll be able to use the slider on the z-axis function.

Z-Offset Setting

Reposition your z-axis to print flat objects on the building plate. It is also helpful if the resin is viscous.

- 1 Complete the z-axis calibration first.
- 2 Click "Move to Z-Axis Zero Position."
- 3 It is recommended to raise the starting position by 0.1 mm.
- 4 Click "Reset Z-Offset" to complete the setting.

Reminder: Rebooting the firmware and performing z-axis calibration will reset the z-offset setting. Please repeat the z-offset setting before each printing.



04 Prepare Your CTB File

The Sonic Mighty 8K only supports CTB format. Use slicer software to turn STL and OBJ files into CTB files.

Convert STL/OBJ File to CTB File

- 1 Import STL or OBJ files into the slicer software. Choose "Sonic Mighty 8K" printer and set the resin parameters according to the resin used, and start slicing.
- 2 After the slicing is completed, save it as a CTB file and your 3D model file is ready to be printed.

Test Files for Your First Print

- 1 The USB included in the tool box contains both STL and CTB files of two test models: "Phrozen_test" and "Phrozen_XP_Finder".
- 2 You can directly print the CTB files in the USB with Aqua-Gray 8K Resin. If you are printing with other resins, slice the STL files with the compatible parameter settings required for your resin.



Slicer Software



Resin Parameters



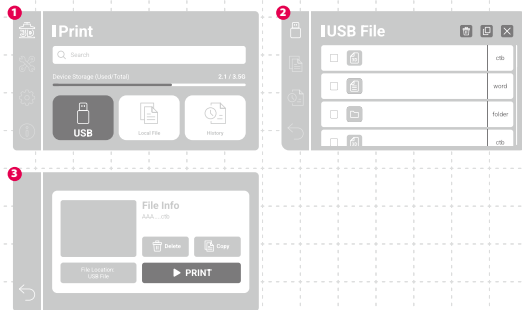
Learn & Download
Phrozen_XP_Finder

05 File Import & Network Connection

Sonic Mighty 8K can import files either via USB or network connection. The printer is also equipped with 3.5 GB built-in memory to save transferred files.

Import Files via USB

- 1 Save the CTB file to your USB, and plug the USB into the printer.
- 2 On the "Print" menu in your touch panel, click "USB" > select the file you want to print > "Print".



Import Files via Network Connection

1 Select the network connection method

Use the Wi-Fi adapter included in the tool box to connect to Wi-Fi, or plug in a network cable and connect through Ethernet.

2 Connecting to the internet

On the "Settings" page on the left column of the touch panel, click "Network" > "Wi-Fi" or "LAN Cable".



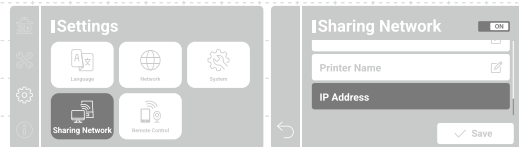
3 Locate the printer IP

Return to the "Settings" page and click "Sharing Network" > enable the setting. The "IP Address" is at the bottom-most field.

4 Connecting the printer to a computer

Have the computer connect to the same local area network as the printer, and enter the printer IP address into the empty folder location on your computer.

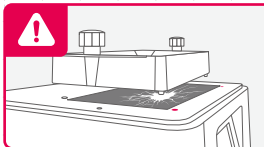
The username and password have to be entered manually for initial use.



06 First Test Print

Use Aqua-Gray 8K Resin and the "Phrozen_XP_Finder" CTB file to perform the test.

- 1 Install the building plate and resin vat. Confirm that both are clean with no foreign objects.
- 2 Shake the resin evenly and pour it into the resin vat. Do not exceed the "MAX" mark on the resin vat when pouring.
- 3 Plug in the USB and select the "Phrozen_XP_Finder" CTB file to start printing.
- 4 Keep the plastic case closed during printing to prevent UV light leakage.
- 5 Once printing is completed, remove the building plate from the printer, place the building plate tilted onto a table and use the metal scraper to carefully remove your print.
- 6 Use a 95% alcohol or Phrozen Wash Resin Cleaner to rinse your printed model; then cure your models with a post-curing chamber; after curing, your first print is complete.



NOTICE: When installing the resin vat, please align the screws at the bottom of the resin vat with the platform grooves to avoid damage caused by the screws scratching the LCD panel.

07 Remote Control App - Phrozen GO

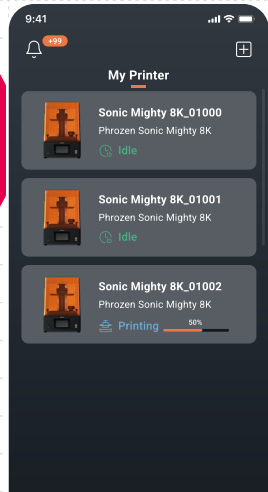
Phrozen GO is a mobile application designed for Phrozen printer users, so you can monitor your Phrozen 3D printers wherever you are. Please scan the QR Code to access the Phrozen GO tutorial.



Android



iOS



After-Sales Service & Warranty

- Phrozen offers a one-year warranty for all parts, excluding consumables components such as the LCD screen and PFA (nFEP) film.
- Sonic Mighty 8K LCD screen is covered under a 3-month warranty. Please note that this warranty does not cover any damages caused by human factors.
- If you encounter any difficulties, please scan the QR code to contact us.

Contact us!



Congratulations!

You have just completed your first run.
We hope you've had a great experience!

Please follow Phrozen's social media accounts
and subscribe to our YouTube channel to learn
more about printing tips and share information
with the community.



Facebook
Page



Facebook
User Group



YouTube



Instagram