

A·UNO

Direct Composite Resin



Match Shades, Meet Preferences

Introducing **A·UNO**, the next stage of direct composite resins.



A·UNO

CE
0123

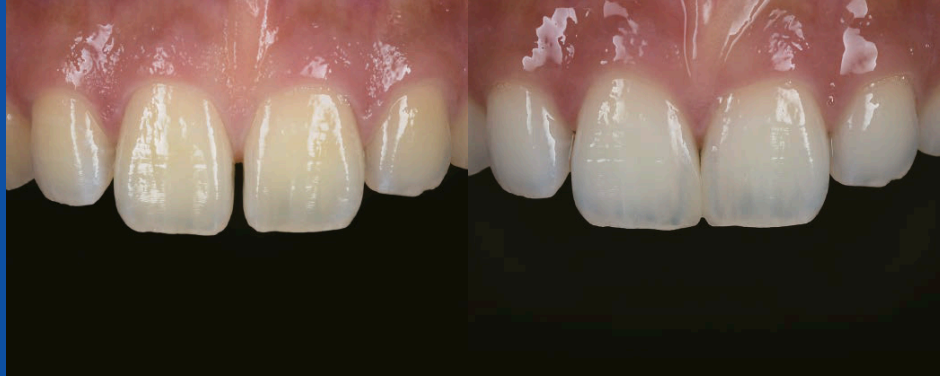
Controlled Medical Device: Resin-based Dental Restorative Material

Unique Colour-Matching Technology

With A·UNO shade selection is not required because it can match the colour of the tooth by its unique colour adaptation technology the “Camouflage Effect”.

Apply A·UNO onto cavity models.

Case 1:
Repaired Median Diastema
(Treated after Whitening)



Case 2:
Repaired Class II Cavity
(bottom of fossa :
TMR-MTA cement
Mielle is applied)



Case 3:
Repaired Class I Cavity
(Characterized pit and
fissure with Nu:le Coat)

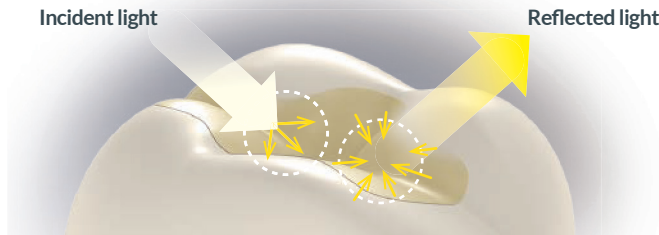


Case 4:
Sealing An Access Hole
(A crown with ceramic
layering on a zirconia frame.
Characterized pit and fissure
with Nu:le Coat)
Adhesive procedure : Apply
Multi Primer Liquid and dry.
Then, apply TMR-AQUA
BOND 0.



The “Camouflage Effect”

1. Pursuing a balance between light diffusivity and light transmission



Light diffusivity

As a result of the light diffusivity, scattered light is reached to the tooth substance and becomes blurred, the filling area and the surrounding tooth colour are easily matched.

Light transmission

Thanks to its high transparency, the matched colour can be stood out because of scattering lights, and filling area is seemed fit to the base colour or surrounding colours.

2. YAMAKIN’s Golden ratio of transparency, shielding property, and intensity

If “transparency” is too low, the filling area might become conspicuous due to lack of transparency when it is used on the incisal part (Enamel).

If “shielding property” is not sufficient, for example, discoloration of the bottom of the fossa may not be covered by one colour.

If “intensity” is insufficient, the filling area is more likely to be white when the cavity is large.

A·UNO was developed to optimize the balance of transparency, shielding property and intensity, and to focus on colour tone design so that one colour can cover many cases in a simple fashion.

One Shade Only

A·UNO was filled into artificial teeth of 16 shades.

The unique colour-matching technology “Camouflage Effect” helps to fit the surrounding colour.



Meet Preferences

Two types can be chosen according to **clinical scenes and doctor’s preferences**



Normal Type

Before light curing, it has less transparency and provides better visibility of the filling part.

- Since the boundary with the tooth substance is easily recognized, it is easier to carry out the morphogenesis procedure.
- Since the transparency will be changed before and after light curing, the filling part can be recognized easily.



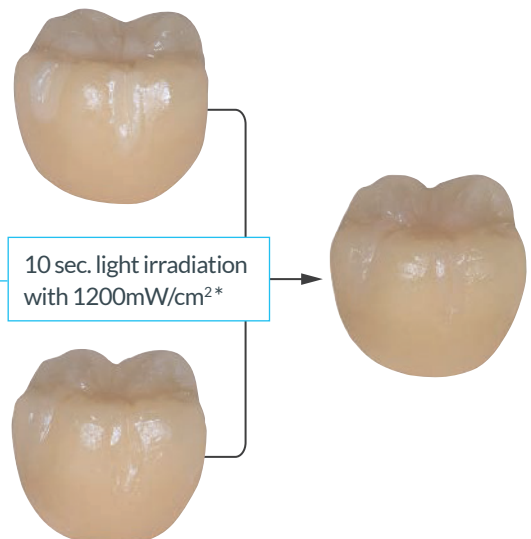
St Type (Steady, Transparent)

There is little change in transparency before and after light curing.

- Can be imaged the colour which is after light curing.

Before Light Curing

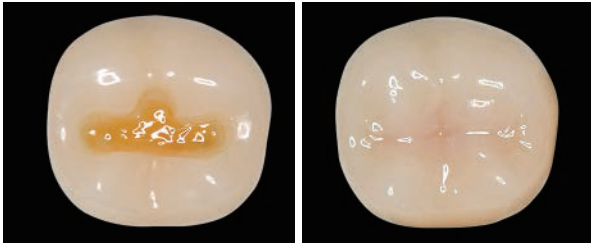
After Light Curing



*4 sec. with 2400mW/cm² (Cavity model: A4)

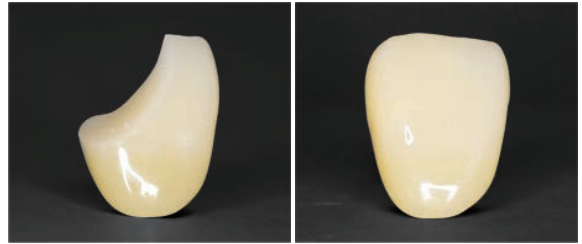
Repairing Cavities using A·UNO

A·UNO was developed with pursuing the balance of shielding property and intensity. Therefore, it can be used for discolouring teeth or anterior teeth with no lining. In addition, it has optimal transparency and can also reproduce the incisal edges.



Class I Cavity With discoloration on the bottom of the fossa
Cavity model : A3

It reproduces the natural appearance with a optimal shielding property of discoloured areas.



Class IV Cavity Cavity that has no lining
Cavity model : A2

The boundary with the tooth substance is also naturally reproduced while the background colour is shielded.



Class II Cavity With a metal adjacent teeth
Cavity model : A3

Reduce the effect of the gray colour of the metal and reproduce the natural colour of tooth.

Combine with TMR-Z Fill 10.

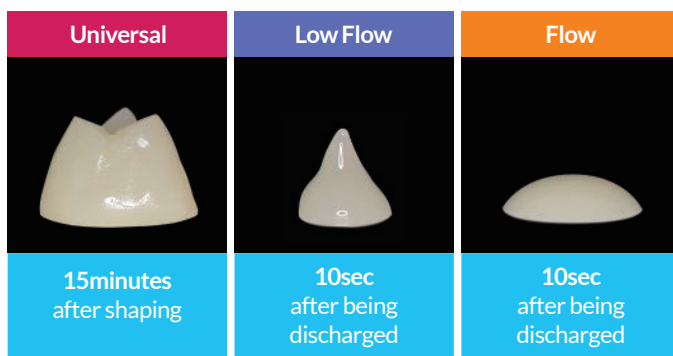
If used together with TMR-Z Fill 10, a wider range of cases can be treated.

More aesthetic repairs can be achieved using A5 or OA5 of Z Fill for darker cases like cervical area of older teeth, or using BW or OW of Z Fill for bright teeth like whitening teeth.



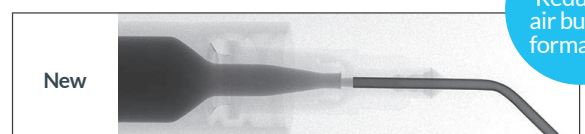
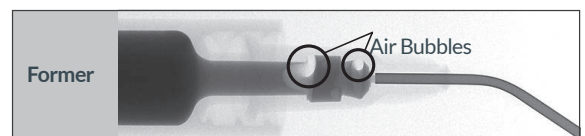
Three Types of Paste Lineup

There are three types of paste. **Universal** which has less stickiness and good shape preservation, **Low Flow** which has low fluidity with shape preservation properties and **Flow** with high fluidity which will easily flow into the inside of a cavity.



Improved Syringe

Suppress the formation of air bubbles with A·UNO's dedicated needle tip.

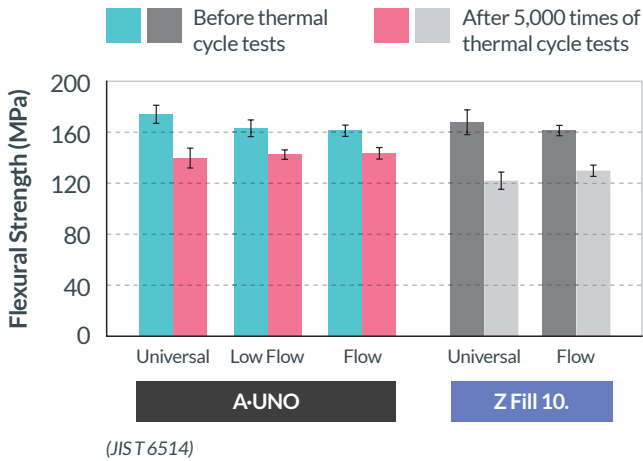


97%
Reduced air bubble formation

Mechanical Strength

By enhancing the water resistance of resin components in matrices and fillers, both initial strength and durability are improved compared to TMR-Z Fill 10.

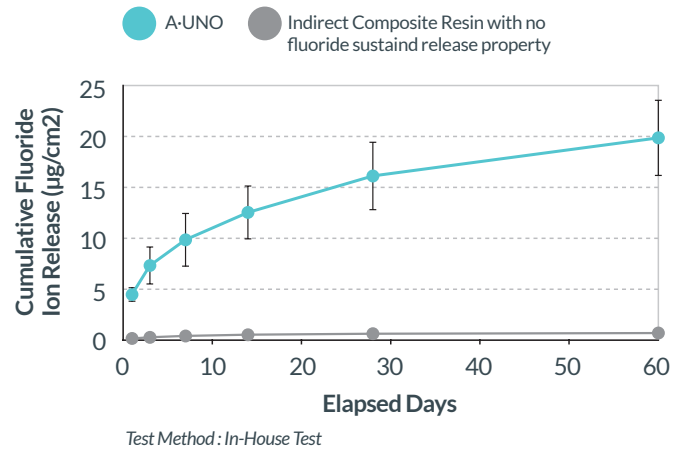
Flexural Strength



Sustained Fluoride Release

Thanks to Fluoride Sustained Release Fillers, A-UNO releases fluoride ions over the long term, and with its fluorine recharge characteristics it takes in fluorine contained in toothpaste and mouthwash and releases it.

Long-term Sustained Release of Fluoride

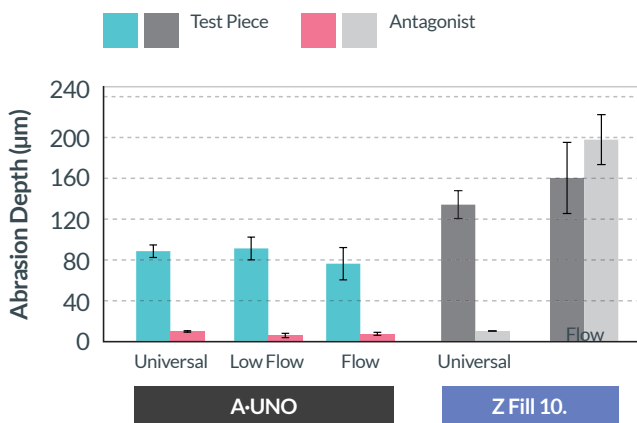


Abrasion Resistance

Thanks to our unique technology, highly filled Ceramics Cluster Fillers and fine inorganic fillers, abrasion resistance for occlusion with tooth substance has been improved compared to existing products.

In addition, the opposing tooth will not be worn out so much by the hardened product. Therefore, a risk of worn out opposing teeth is reduced.

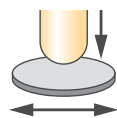
Abrasion Test of Opposing Tooth



Test Method: In-House Test

Test conditions:
Impact abrasion test in water at 37°C
Load Weight: 5.8kgf
Frequency: 50,000 cycle

1 cycle:
1 impact and movement by 1 mm to the left and right



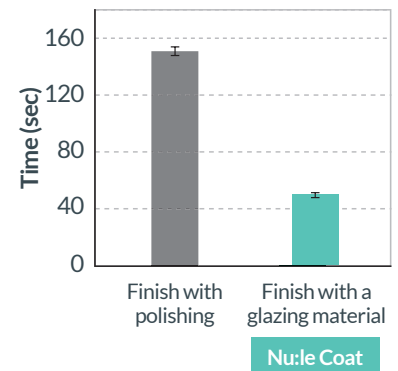
Polishability

Ceramics Cluster Fillers and fine inorganic fillers make polishing easier, and if you use Nu:le Coat instead of polishing, the work will be easier with working time also being shortened (about a 1/3).

Finishing Time - Time to Achieve Gloss



A-UNO Universal Basic
Polishing time about 120 sec.



Working time excluding light curing time
Test Method: In-House Test



A·UNO Single Package

Code	Description	Size	Qty	Price
40800001	A·UNO Universal Basic	4.0g (2mL)	1	£26
40800101	A·UNO Universal St Basic	4.0g (2mL)	1	£26
40800201	A·UNO Low Flow Basic - Accessory: Needle Tip: 10 pcs.	2.8g (1.5mL)	1	£26
40800301	A·UNO Low Flow St Basic - Accessory: Needle Tip: 10 pcs.	2.8g (1.5mL)	1	£26
40800401	A·UNO Flow Basic - Accessory: Needle Tip: 10 pcs.	2.8g (1.5mL)	1	£26
40800501	A·UNO Flow St Basic - Accessory: Needle Tip: 10 pcs.	2.8g (1.5mL)	1	£26



#A·UNO Universal Basic



#A·UNO Universal St Basic



#A·UNO Low Flow Basic



#A·UNO Low Flow St Basic



#A·UNO Flow Basic



#A·UNO Flow St Basic



Abbey Dental Supplies
4 Imperial Way, Croydon, CR0 4RR
T: 020 8683 4528
www.abbeydentalsupplies.com



Scan to visit our website



Order Online

www.abbeydentalsupplies.com



Order by phone

020 8683 4528



Order by Email

sales@abbeydentalsupplies.com



Order on WhatsApp

+44 (0) 7586 208031